

# The Encounter Centre

Encounter is a multi-purpose facility run by volunteers from Birchwood Community Church. When complete, Encounter will house a furniture and clothing recycle unit (already open), a community room, a worship centre, youth drop-in and cafe, as well as toddlerzone. Arts and crafts will continue to take place at **HeArt of the Community** in the Birchwood Shopping Centre.

Months of effort have been devoted to converting the premises of what used to be the Silver Birch pub. Church members, families, friends and volunteers have turned their hands to a multitude of tasks.



## Who are we?

Established for more than 25 years, we are a growing multi-facility church based in Birchwood. We have two main church activities: Birchwood Community Church and Gorse Covert Community Church. Each has its own style of worship. We also have regular activities for all ages during the week and special events throughout the year.

### **Birchwood Community Church**

Sunday morning service: 10.45am  
We meet on the first floor at the Encounter Centre.  
The lift is at the entrance facing Betfred.

Crèche and Sunday school available.

### Signed Services:

Once a month, we run the BSL signed service on Sunday morning at 10.45am.  
Next service: 28th June 2009  
For enquiries: [birchwoodsign@yahoo.com](mailto:birchwoodsign@yahoo.com)

### **Gorse Covert Community Church**

Sunday evening service: 6.00pm (tea/coffee & cakes)  
Service starts at 6.30pm  
Gorse Covert Primary School

*First Sunday* is Church for those who don't do church. Every first Sunday of the month, from 6.00 – 7.30pm, at Gorse Covert Primary School.

### **Birchwood Resource Centre**

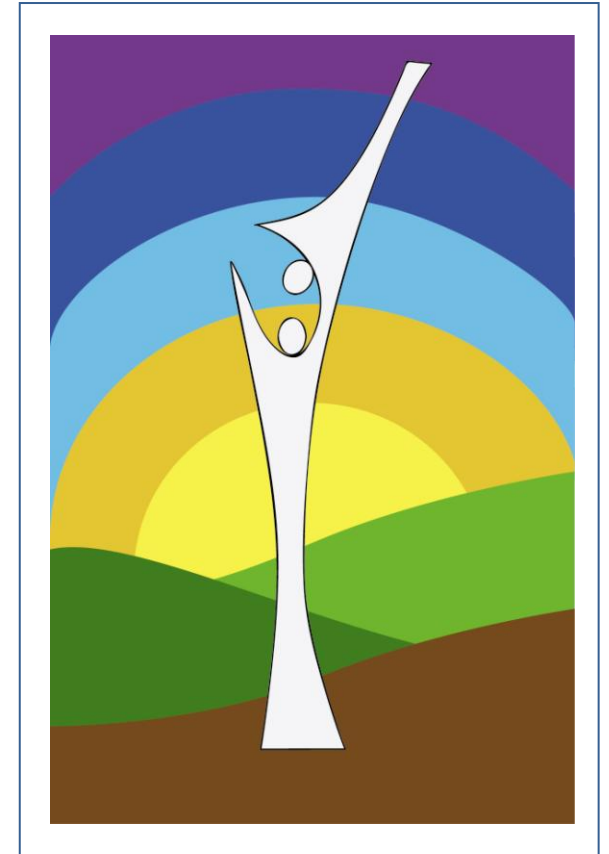
Weekdays except Wednesday: 9.00am – 1.00pm

### Our Address:

53 Dewhurst Road, Birchwood, WA3 7PG  
Tel: 01925 850740  
Mobile: 07521 309390  
Call May to book the centre for any church activity or for prayer.



**Birchwood Community Church**  
**Gorse Covert Community Church**  
[www.birchwood-church.org](http://www.birchwood-church.org)



# Encounter Centre

We are located in the premises of the former Silver Birch pub, next to the Birchwood Shopping Centre.

# Encounter Centre gets unwrapped

The first parts of the Encounter Centre have now been unwrapped. Birchwood Community Church has moved its Sunday morning worship services to the refurbished first floor of the former Silver Birch premises at the end of Birchwood Shopping Centre.

Refurbishment was completed in record time, as church members, friends, families and local tradespeople put in many hours of hard work to meet the end of April deadline for the move.

Encounter provides the first permanent home for Birchwood Community Church since the church was formed more than 25 years ago. Church members hope it will become a place of welcome for everyone in Birchwood.



# Something for everyone

## Re:Use

Re:Use opened its doors in May. It offers good quality clothes recycling for those in greatest need in the community. We are collecting good quality clothes, shoes and furniture (sorry, no electrical goods or TVs) so let us know if you have anything for re-use.



Re:Use is open every Wednesday from 10.00am – 2.00pm and every Saturday from 10.00am – 12.00 noon. It is located next to Birchwood Shopping Centre, round the corner from Barclays Bank.

## 3:16

Our young people will have a place to call their own, where they can meet up, chill and generally put the world to rights. Why is it called 3:16? It comes from the New Testament, John's Gospel, chapter 3, verse 16.

## Café Encounter

The cafe will be a meeting point for people during the day. We hope it will be THE place to be, where you can stop for a cuppa, a chat and a warm welcome.

## Community Room

The community room will provide a self-contained space for meetings, seminars and other small events. It will be open for use by any groups in the community. Please call 01925 850740 for more details (weekdays 9.00am – 1.00pm, except Wednesday).

## Toddlerzone

This unit will offer a crèche facility. More details will be available later.

## HeART of the Community

Every Tuesday free art and craft classes take place at HeART, located two doors away from St. Rocco's in the Birchwood Shopping Centre. Everyone is welcome to join in. There are various classes from 10.00am – 7.00pm on Tuesday. Mums and Tots Hour is from 2.00 – 3.00pm.

